

Box Properties

--Description--

Name:

Type: Passive Radiator Box

Shape: Prism, square

--Box Parameters--

Vb = 2.509 cu.ft

V(total) = 2.573 cu.ft

QL = 6.654

F3 = 38.79 Hz

Fill = minimal

--Passive Radiators--

No. of Passive Radiators = 2

Fs = 21 Hz

Qms = 2

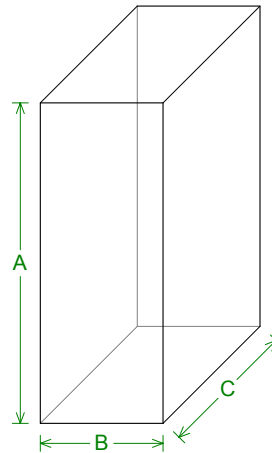
Vas = 40 liters

Cms = 750 $\mu\text{m/N}$

Mms = 76.58 g

Rms = 11.02 lb/s

Sd = 194 sq.cm



--External Dimensions--

A = 30 in

B = 11.5 in

C = 17.1 in

--Internal Dimensions--

A = 28.5 in

B = 10 in

C = 15.6 in

--Wall Thickness--

Front = 0.75 in

Side = 0.75 in

Driver Properties

--Description--

Name: 295-485 (10" DVC)

Type: Standard one-way driver

Company: Dayton Loudspeaker Co.

Piston: Polypropylene-coated paper cone.

Suspension: Medium-roll butyl rubber surround.

Frame: Cosmetic steel frame.

Voice Coil: 1.5 inch dual voice coil.

Terminals: Push on terminals.

Magnet: Vented pole piece. Bumped backplate.

Magnetic shielding

--Configuration--

No. of Drivers = 1

Dual voice coils = parallel

--Mechanical Parameters--

Fs = 25 Hz

Qms = 3.2

Vas = 110.4 liters

Cms = 670 $\mu\text{m/N}$

Mms = 57 g

Rms = 6.614 lb/s

Xmax = 6 mm

P-Dia = 20.8 cm

Sd = 340.7 sq.cm

P-Vd = 0.0072 cu.ft

--Electrical Parameters--

Qes = 0.43

Re = 3.1 ohms

Le = 1.2 mH

Z = 4 ohms

BL = 1.821 lb/A

Pe = 80 watts

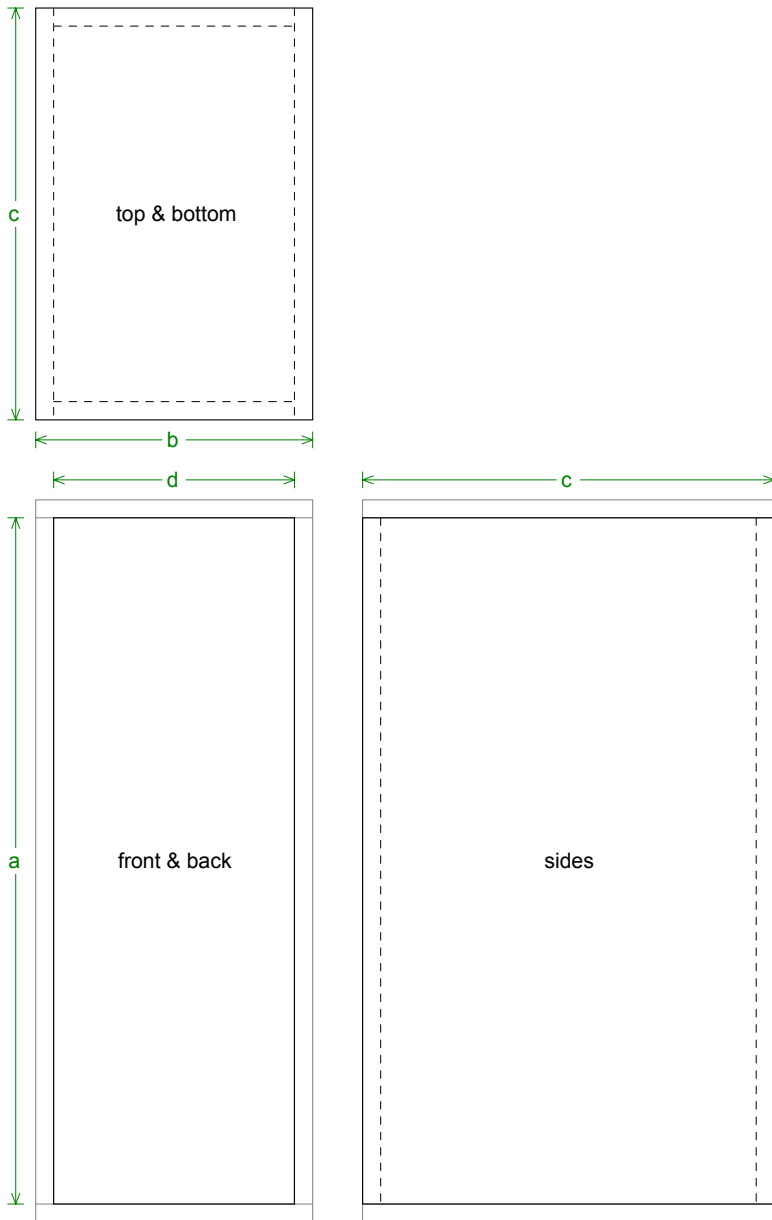
--Electromech. Parameters--

Qts = 0.38

no = 0.39 %

1-W SPL = 88 dB

2.83-V SPL = 92.7 dB



Box Parts

Box Shape: Square Prism

1 Top, 1 Bottom: depth (c) = 17.1 in
width (b) = 11.5, thickness = 0.75 in

1 Front, 1 Back: height (a) = 28.5 in
width (d) = 10, thickness = 0.75 in

2 Sides: height (a) = 28.5 in
depth (c) = 17.1, thickness = 0.75 in

--Driver Mounting--
Mounting: Flush

fractions

1/16	1/8	3/16	1/4	5/16	3/8	7/16	1/2	9/16	5/8	11/16	3/4	13/16	7/8	15/16
0.0625	0.1250	0.1875	0.2500	0.3125	0.3750	0.4375	0.5000	0.5625	0.6250	0.6875	0.7500	0.8125	0.8750	0.9375

decimal equivalents



Wiring Diagram

